

测试报告

编号 : GZIN1907039741MR_CN

日期 : 2019-08-05

页码 : 1 of 6

客户名称: 东莞市裕天硅橡胶科技有限公司
客户地址: 广东省东莞市黄江镇田美工业园北区盛业路 32 号

样品名称 : 黑色电力管
型号 : HJ-16223

以上信息及样品由客户提供及确认, SGS 不承担证实客户提供信息的准确性、适当性和(或)完整性的责任。

SGS 参考号 : CP19-040439
收样日期 : 2019-07-29
测试开始时间 : 2019-07-29
测试结束时间 : 2019-08-05
测试结果 : 请见下页 (除另有特别说明外, 此报告结果仅对测试样品负责)

通标标准技术服务有限公司广州分公司

检测中心

授权签名



李叶娇

授权签字人



测试报告

编号 : GZIN1907039741MR_CN

日期 : 2019-08-05

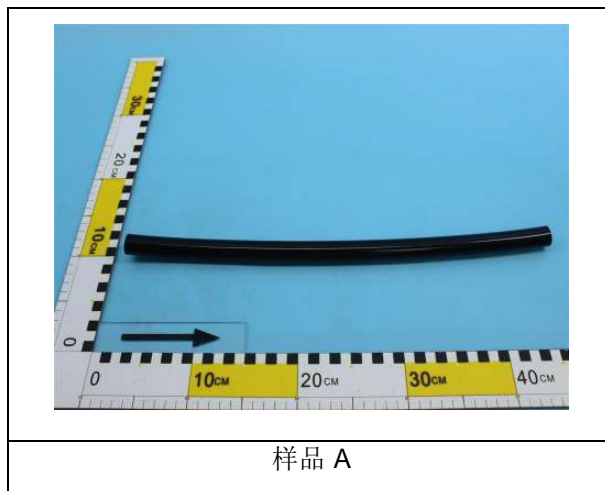
页码 : 2 of 6

结果总结:

序号	测试项目	测试方法	结果		结论
1	撕裂强度	GB/T 529-2008 方法 B 程序 (a)	47kN/m		/
2	拉伸测试	GB/T 528-2009	拉伸强度	10.5MPa	/
			断裂伸长率	1000%	

备注: 合格: 达到要求
不合格: 未达到要求
/: 不下判定

原样照片:



Unless otherwise agreed in writing, this document is issued by the Company subject to its General Conditions of Service printed overleaf, available on request or accessible at <http://www.sgs.com/en/Terms-and-Conditions.aspx> and, for electronic format documents, subject to Terms and Conditions for Electronic Documents at <http://www.sgs.com/en/Terms-and-Conditions/Terms-e-Documents.aspx>. Attention is drawn to the limitation of liability, indemnification and jurisdiction issues defined therein. Any holder of this document is advised that information contained hereon reflects the Company's findings at the time of its intervention only and within the limits of Client's instructions, if any. The Company's sole responsibility is to its Client and this document does not exonerate parties to a transaction from exercising all their rights and obligations under the transaction documents. This document cannot be reproduced except in full, without prior written approval of the Company. Any unauthorized alteration, forgery or falsification of the content or appearance of this document is unlawful and offenders may be prosecuted to the fullest extent of the law. Unless otherwise stated the results shown in this test report refer only to the sample(s) tested and such sample(s) are retained for 30 days only. Attention: To check the authenticity of testing /inspection report & certificate, please contact us at telephone: (86-755) 8307 1443, or email: CN.Doccheck@sgs.com

SGS-CSTC Guangdong Technical Services Co., Ltd.
Guangzhou Branch Testing Center/Reliability Laboratory

198 Kazhu Road, Sciencetech Park Guangzhou Economic & Technology Development District, Guangzhou, China 510663 t(86-20) 82155555 f(86-20) 82075188 www.sgs.com.cn
中国·广州·经济技术开发区科学城科珠路198号 邮编:510663 t(86-20) 82155555 f(86-20) 82075188 e sgs.china@sgs.com

测试报告

编号 : GZIN1907039741MR_CN

日期 : 2019-08-05

页码 : 3 of 6

1.测试项目: 撕裂强度

样品描述: 见照片

测试方法: GB/T 529-2008 方法 B 程序 (a)

测试条件:

试样厚度: 3.11mm

测试速度: 500mm/min

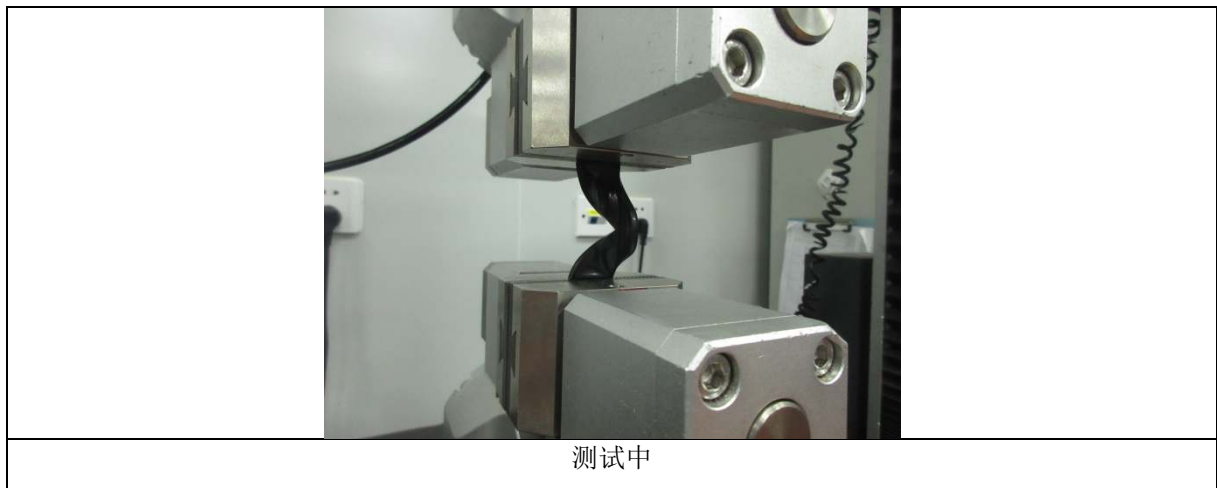
实验室环境条件: 23±2℃, 50±5%RH

测试结果:

测试项目	测试结果
撕裂强度	47kN/m

备注: 测试试样从样品中裁取。

测试照片:



Unless otherwise agreed in writing, this document is issued by the Company subject to its General Conditions of Service printed overleaf, available on request or accessible at <http://www.sgs.com/en/Terms-and-Conditions.aspx> and, for electronic format documents, subject to Terms and Conditions for Electronic Documents at <http://www.sgs.com/en/Terms-and-Conditions/Terms-e-Document.aspx>. Attention is drawn to the limitation of liability, indemnification and jurisdiction issues defined therein. Any holder of this document is advised that information contained hereon reflects the Company's findings at the time of its intervention only and within the limits of Client's instructions, if any. The Company's sole responsibility is to its Client and this document does not exonerate parties to a transaction from exercising all their rights and obligations under the transaction documents. This document cannot be reproduced except in full, without prior written approval of the Company. Any unauthorized alteration, forgery or falsification of the content or appearance of this document is unlawful and offenders may be prosecuted to the fullest extent of the law. Unless otherwise stated the results shown in this test report refer only to the sample(s) tested and such sample(s) are retained for 30 days only. Attention: To check the authenticity of testing /inspection report & certificate, please contact us at telephone: (86-755) 8307 1443, or email: CN.Doccheck@sgs.com

SGS-CSTC 中检集团技术服务有限公司广州分公司
Guangzhou Branch Testing Center/Reliability Laboratory

198 Kazhu Road, Sciencetech Park Guangzhou Economic & Technology Development District, Guangzhou, China 510663 t(86-20) 82155555 f(86-20) 82075188 www.sgs.com.cn
中国·广州·经济技术开发区科学城科珠路198号 邮编:510663 t(86-20) 82155555 f(86-20) 82075188 e sgs.china@sgs.com

测试报告

编号 : GZIN1907039741MR_CN
 日期 : 2019-08-05
 页码 : 4 of 6



设备信息:

设备	型号	设备编号	校准日期	下次校准日期
电子万能材料试验机	CMT4304	GZMR-PL-E062	2018-09-18	2019-09-17

2.测试项目: 拉伸测试

样品描述: 见照片

测试方法: GB/T 528-2009

测试条件:

试样: 1 型

试样厚度: 3.04mm

测试速度: 500mm/min

标距: 25mm

实验室环境条件: (23 ± 2) °C, (50 ± 5) % RH



Unless otherwise agreed in writing, this document is issued by the Company subject to its General Conditions of Service printed overleaf, available on request or accessible at <http://www.sgs.com/en/Terms-and-Conditions.aspx> and, for electronic format documents, subject to Terms and Conditions for Electronic Documents at <http://www.sgs.com/en/Terms-and-Conditions/Terms-e-Document.aspx>. Attention is drawn to the limitation of liability, indemnification and jurisdiction issues defined therein. Any holder of this document is advised that information contained hereon reflects the Company's findings at the time of its intervention only and within the limits of Client's instructions, if any. The Company's sole responsibility is to its Client and this document does not exonerate parties to a transaction from exercising all their rights and obligations under the transaction documents. This document cannot be reproduced except in full, without prior written approval of the Company. Any unauthorized alteration, forgery or falsification of the content or appearance of this document is unlawful and offenders may be prosecuted to the fullest extent of the law. Unless otherwise stated the results shown in this test report refer only to the sample(s) tested and such sample(s) are retained for 30 days only. Attention: To check the authenticity of testing /inspection report & certificate, please contact us at telephone: (86-755) 8307 1443, or email: CN.Doccheck@sgs.com

测试报告

编号 : GZIN1907039741MR_CN

日期 : 2019-08-05

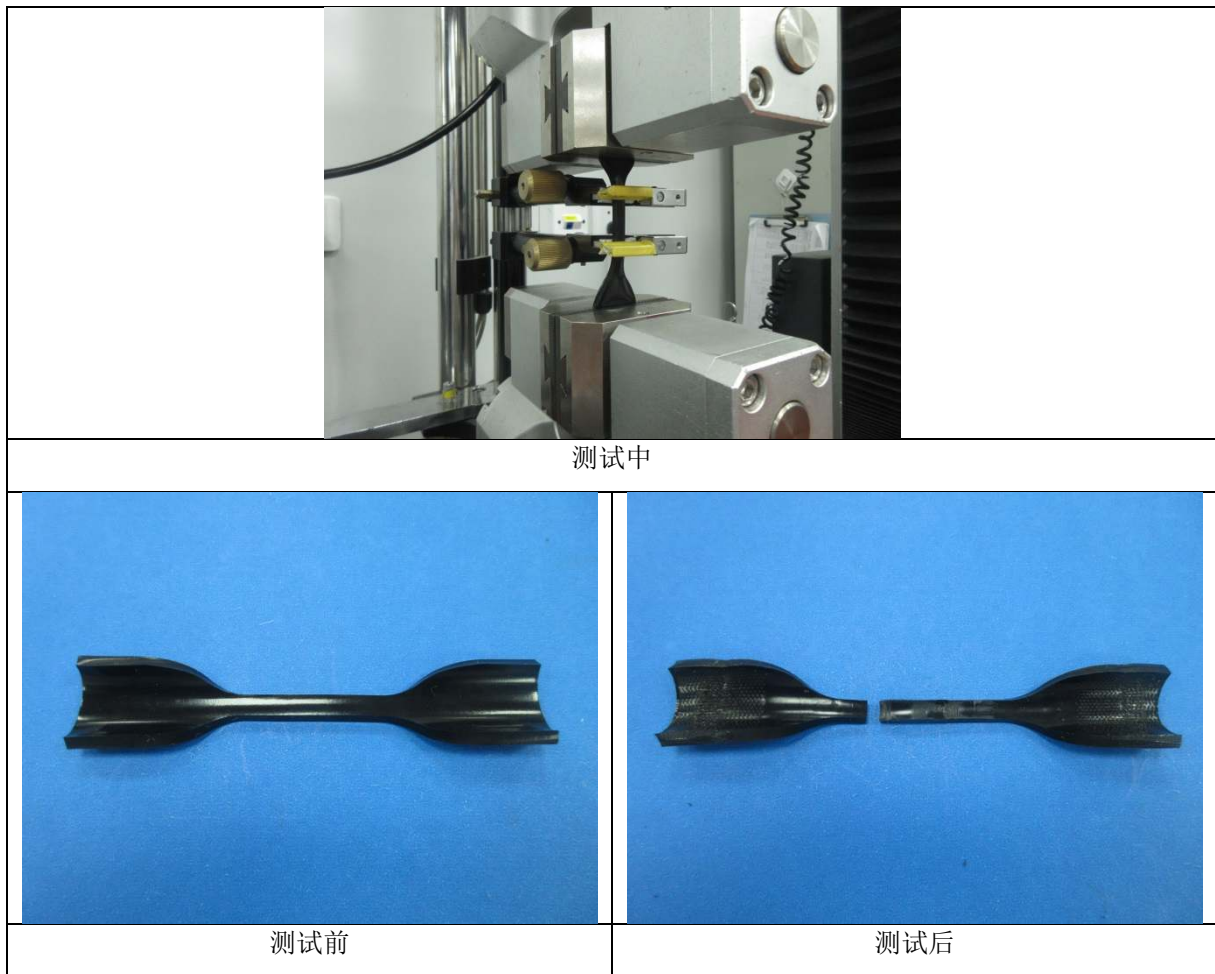
页码 : 5 of 6

测试结果:

测试项目	测试结果
拉伸强度	10.5MPa
断裂伸长率	1000%

备注: 测试试样从样品中截取。

测试照片:



Unless otherwise agreed in writing, this document is issued by the Company subject to its General Conditions of Service printed overleaf, available on request or accessible at <http://www.sgs.com/en/Terms-and-Conditions.aspx> and, for electronic format documents, subject to Terms and Conditions for Electronic Documents at <http://www.sgs.com/en/Terms-and-Conditions/Terms-e-Documents.aspx>. Attention is drawn to the limitation of liability, indemnification and jurisdiction issues defined therein. Any holder of this document is advised that information contained hereon reflects the Company's findings at the time of its intervention only and within the limits of Client's instructions, if any. The Company's sole responsibility is to its Client and this document does not exonerate parties to a transaction from exercising all their rights and obligations under the transaction documents. This document cannot be reproduced except in full, without prior written approval of the Company. Any unauthorized alteration, forgery or falsification of the content or appearance of this document is unlawful and offenders may be prosecuted to the fullest extent of the law. Unless otherwise stated the results shown in this test report refer only to the sample(s) tested and such sample(s) are retained for 30 days only. Attention: To check the authenticity of testing /inspection report & certificate, please contact us at telephone: (86-755) 8307 1443, or email: CN.Doccheck@sgs.com

SGS-TESTING SERVICES
Guangzhou Branch Testing Center/Reliability Laboratory

198 Kazhu Road, Sciencetech Park Guangzhou Economic & Technology Development District, Guangzhou, China 510663 t(86-20) 82155555 f(86-20) 82075188 www.sgs.com.cn
中国·广州·经济技术开发区科学城科珠路198号 邮编:510663 t(86-20) 82155555 f(86-20) 82075188 e sgs.china@sgs.com

测试报告

编号 : GZIN1907039741MR_CN

日期 : 2019-08-05

页码 : 6 of 6

设备信息:

设备	型号	设备编号	校准日期	下次校准日期
电子万能材料试验机	CMT4304	GZMR-PL-E062	2018-09-18	2019-09-17

附录信息: 检测报告仅用于客户科研、教学、内部质量控制、产品研发等目的, 仅供内部参考。

***** 报告结束*****



Unless otherwise agreed in writing, this document is issued by the Company subject to its General Conditions of Service printed overleaf, available on request or accessible at <http://www.sgs.com/en/Terms-and-Conditions.aspx> and, for electronic format documents, subject to Terms and Conditions for Electronic Documents at <http://www.sgs.com/en/terms-and-conditions/terms-e-document.aspx>. Attention is drawn to the limitation of liability, indemnification and jurisdiction issues defined therein. Any holder of this document is advised that information contained hereon reflects the Company's findings at the time of its intervention only and within the limits of Client's instructions, if any. The Company's sole responsibility is to its Client and this document does not exonerate parties to a transaction from exercising all their rights and obligations under the transaction documents. This document cannot be reproduced except in full, without prior written approval of the Company. Any unauthorized alteration, forgery or falsification of the content or appearance of this document is unlawful and offenders may be prosecuted to the fullest extent of the law. Unless otherwise stated the results shown in this test report refer only to the sample(s) tested and such sample(s) are retained for 30 days only. Attention: To check the authenticity of testing /inspection report & certificate, please contact us at telephone: (86-755) 8307 1443, or email: CN.Doccheck@sgs.com

SGS-CSTC Standards Technical Services Co., Ltd.
Guangzhou Branch Testing Center/Reliability Laboratory

198 Kazhu Road, Sciencetech Park Guangzhou Economic & Technology Development District, Guangzhou, China 510663 t (86-20) 82155555 f (86-20) 82075188 www.sgs.com.cn
中国·广州·经济技术开发区科学城科珠路198号 邮编: 510663 t (86-20) 82155555 f (86-20) 82075188 e sgs.china@sgs.com